



OHIO VALLEY WOODTURNERS

April 2015

WWW.OVWG.ORG

A Chapter of the American Association of Woodturners

www.woodturner.org

Home Grown Demonstration

April 18, 2015

Program support for our Visiting Artist Series is provided by ArtsWave
www.theartswave.org



What's Inside

President's Letter	2-3
Events / New Members	4
Picnic/Things of Note	4
Mark Sfirri Article	5-7
Scholarship Auction	7
March Show & Tell	8-9
Turning 2015 / Hands-on	10
Appalachian Festival	11
Board and Mentors	12

Hollow Forms



Hollowing Techniques



David Morrical

Boxes

Lowell Converse



BACK TO BASICS DEMO

Come and learn from four highly talented and experienced OVWG woodturners.....



Swept Back

Bowl Gouge Grinding

Keith Bundy

Three Cornered Bowl

Gary Brackett



Natural Edge Bowls



Hollowing Tools and Systems

Bowl Blank Selection, Preparation and Mounting

President's Letter



Our elections will be held at our April Meeting. The Board's Nominating Committee is very pleased to propose the following candidates for President and 2nd Vice President. The 2nd VP role involves developing the programming for the guild.

For President, we propose Jerry Warner. Jerry grew up on a small cotton farm in Louisiana where he spent his formative years chopping cotton in the spring and picking it in the fall. He had the good fortune of having a large hardwood forest nearby where he was able to spend a lot of time enjoying and learning about nature.

After retiring from Northern Kentucky University, where he served as a faculty member and administrator for 30 years, he decided to get seriously involved in woodworking and this very quickly led to a concentration on woodturning. He accelerated his learning by taking classes from some of the best known woodturners in the country.

While he places considerable emphasis on turning natural edge bowls, he turns a wide variety of other items such as common bowls, hollow forms, vases, ornaments, etc. More recently he has become interested in multi-axis spindle turning and creating and applying surface enhancements to deep turned vessels.

For 2nd Vice President, we propose John Jackobs. John and his wife live in Mason where his shop is in the basement. He has been retired for 10 years and with retirement he has been able to devote as much or as little time to woodworking as he wants. His woodworking involves both turning and flat work. For years prior to retirement he and his wife frequented the arts and crafts fairs in the surrounding area. He always wondered what it would be like to be on the other side of the booth. He has been a vendor of "Utilitarian Art In Wood" from his company Spectrum Wood for the past nine years. He tried to give away the items he made but they just kept accumulating, so why not make a buck or two and he has found the interaction with the attendees exhilarating. He has been seriously woodturning for the past nine years, joining the OVWG three years ago. He likes to turn the fruit tree woods, cherry, apple and pear.

All of his formal college education was in chemistry. But the type of chemistry involved about 10% chemistry and 90% computer data analysis. He liked working with computers more than working with chemistry and so his career wandered down the IT path. John retired from a career involved in higher education, eighteen years as a college administrator, registrar and IT director at two liberal arts colleges. After the college experience he joined and later retired from a software company where he taught IT staffs how to use the company's software as well as traveling about the US implementing portions of the software.

The Nominating Committee is confident that Jerry and John will perform well in the roles of President and 2nd VP. As part of the election process, we will take any additional nominations from the group. After nominations are closed we will take a voice vote.

NEW NAME: The name of our new facility will be the OVWG Learning Center as opposed to Clubhouse. We feel the idea of a learning center more accurately fits with the intended use and expected benefits of this facility.

DONATIONS TO THE OVWG: We have created an easy way for members (or others) to make a donation to the OVWG. Once you access the website, click on the Menu button to find the Donations module. You do not have to go thru the member login process to reach the Donations module. Donations via the website would be made using a credit card. If you wish to make a donation via check, you can contact the Treasurer, Kurt Fogelsong. Remember that the OVWG is a

501(c)(3) organization thus donations are tax deductible.

We have provided four categories of possible donations. The first is General Contributions. Funds provided here may be used at the discretion of the Board for the benefit of the Guild. Examples might be for purchasing equipment to support our monthly meetings, paying for professional instructors, or buying new videos.

The second area is the Scholarship Fund. Each year we typically award two to three scholarships of up to \$500 for each person. Being a 501(c)(3), we are prohibited from using any of our revenues for the individual benefit of members, so we maintain a separate scholarship fund. We normally replenish this fund with proceeds from two scholarship auctions - one at a spring homegrown meeting, and another in the fall. As necessary, we also supplement these revenues with some of the proceeds from the auction at the Symposium. Any donations to this area would support funding annual scholarships.

Earmarked Contributions are the third area. These fund would be used for the exact purpose stipulated by the donor, as long as it fits with the mission and goals of the OVWG. There is a field in the Donation Module where a donor can specify what he or she wants the funds to be used for. As we get started with the Learning Center, we are purchasing tools and equipment. This is one area where earmarked donations would be of value and greatly appreciated by the Guild.

Finally, we can accept Donations in Kind. These can be tools or equipment that can be used in our new Learning Center, loaned out to newer members to help them get started, or used at our monthly meetings. We might also sell or auction donated items to generate revenue for the operation of the Guild or the Learning Center.

CHALLENGE GRANT: One of our members has pledged a donation of \$1500 to support the new Learning Center. He has issued a challenge to the membership to match his grant. Please visit the Donation Module of the website if you would like to respond to this challenge!

WISH LIST: We have developed a wish list of items that we intend to procure for the new Learning Center. Please visit the website to see the wish list. It is in the Learning Center tab of the Documents section. You will have to log in as a member to see this. If anyone has or would like to purchase and donate any of these items, please visit the Donation section of the Website and go to the Donations in Kind section, or contact KC Kendall at kckendall@cinci.rr.com.

ANNUAL MEMBERSHIP SURVEY: A summary of the results from the 2015 Membership Survey has been published on the website in the Documents tab under "Survey". The summary includes data on the age of our membership, time in the OVWG, length of time as a woodturner, skill levels, skills of interest, and who owns what type of lathe. There are also the members' ratings of last year's meetings and a ranking of the elements of the OVWG program and what members consider to be important.

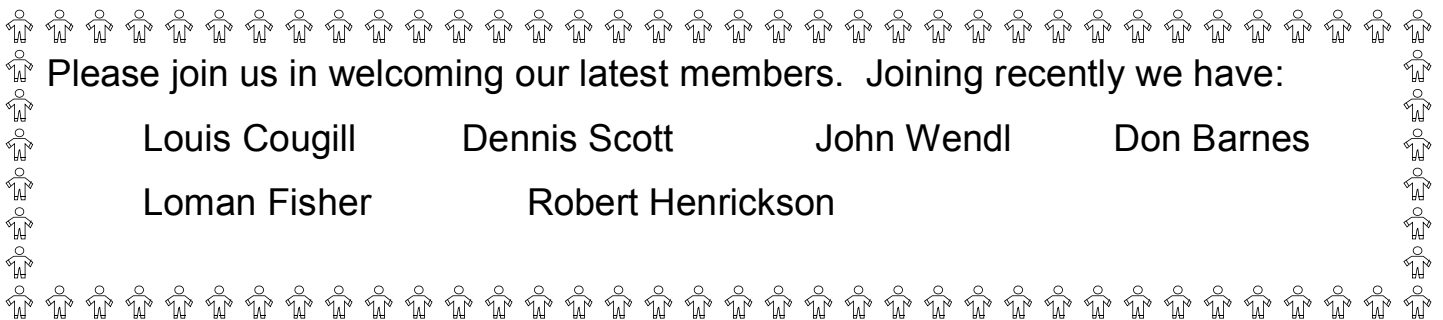
The Board is using input from the survey as we develop the slate of professional woodturners for 2016 as well as topics for homegrown demo's. We are taking action to finish moving photos from the old website to the new one. We have procured new videos and will be adding them to the library. We plan to continue to combine the annual banquet and the December holiday party, and hold a demonstration meeting in January. Finally, as we open our Learning Center, we plan to expand our efforts on skill building and efforts to involve younger people in woodturning. If you have questions or comments on the results of the survey, or actions that the Board may be taking (or not taking), please contact one of the Board members.

KC Kendall, President

Upcoming/Ongoing Events

Apr 18, 2015	Homegrown
May 8-10, 2015	Appalachian Festival
May 16, 2015	Pat Matranga http://www.matrangadesigns.com/
Jun 20, 2015	Zeller Memorial Picnic
Jun 25-28, 2015	AAW Symposium, Pittsburgh, PA
Summer 2015	Summer Workshops
Sep 19, 2015	Turnfest 2015
Oct 9-11, 2015	Turning 2015
Nov 21, 2015	Todd Hoyer youtube video

New Members



June Zeller Memorial Picnic Contest

The theme for this year's June contest will be to make a **BEADS OF COURAGE** box. The boxes will be collected and donated to Cincinnati Children's Hospital Medical Center. The boxes are given to cancer patients to hold the beads they receive for reaching milestones in their treatment regimen. More information will be provided concerning specifications.

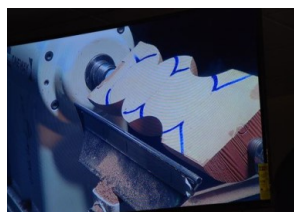
Things of Note

- OVWG name tags with a magnetic back are available for \$3 from member Chris Barrett. To get a name tag, send Chris an email at artisan022@icloud.com, telling him how you want your name to appear. He will have your name tag at a subsequent meeting.
- The OVWG now has **business cards** printed and available for members to be given out and posted at related wood turning businesses. Contact KC Kendall for a supply.
- We continue to have opportunities to do demo's in many different locales. We have an "approved demonstrator" list that receives an email with a chance to volunteer for demo events. If you would like to be on the approved demonstrator list, please contact KC Kendall.

Mark began with a description of the tools he uses. He sharpens both his deep fluted detail gouge and his deep fluted bowl gouge to an angle of 30 to 32°. He doesn't use the Wolverine jig to get a fingernail grind but rather puts the end of the tool in the pocket of the Wolverine rail and rotates the tool against the grinding wheel.

Mark prefers to use a Oneway cup center to drive the piece of wood versus using a spur center. He considers the cup center to be much safer in the event that there is a catch when turning the wood. He files the points of calipers round so that they do not scar the wood when measuring the diameter. Mark likes the 6 inch size calipers best.

SPLIT SHAPED TURNING: for his first turning, Mark used two pieces of wood that were glued together with the grocery store bag type paper in between to form a block about 3 by 12

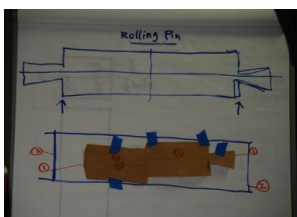


inches. He first turned a large bead and a cove. Then he split the pieces apart and marked the centers

on each end of one half of the block. He then turned a Bead where the cove is and a cove where the bead is. This produced a very interesting shape which could be used for a candleholder. The picture shows the completed turning sitting next to the other half with only the bead and cove turned on it.

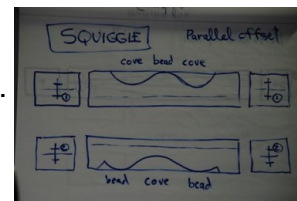


Mark suggested that we go to YouTube and look for his video on multi-axis turning in which he turns a rolling pin. He showed on a chart pad how he lays out the rolling pin and determines what axis to use for each section. He did the same for an angled baseball bat. Some



of the pictures are included here. There are also many excellent pictures on the OVWG website.

SQUIGGLE: to make the squiggle, Mark started with a rectangular shaped blank. Mounting the piece on center, he slightly knocked the corners off with a



roughing gouge, not making the piece completely round. On a center line Mark mounted the piece off center on the point midway between the center and the edge of the piece. Using his roughing gouge he made the piece round on one side. While mounted on this set of centers, he made two coves with a bead between them. He turned down to solid wood on the coves. He ended the coves about 1 inch from each end of the piece.

He then shifted the piece to the other offset point that is again on the centerline and midway between the middle and the edge of the blank. He repeated the process to slightly round off the piece using his roughing gouge and then did the opposite of the first side, turning two beads with a cove between them. He centered the cove over the first bead on the other side, and the same with the two beads being centered over the coves on the other side. You should work to make the beads and coves symmetrical so that the curves, when viewed from the side, are consistent. If you go a bit deeper in the center cove, it accentuates the curve on the sides of the piece.

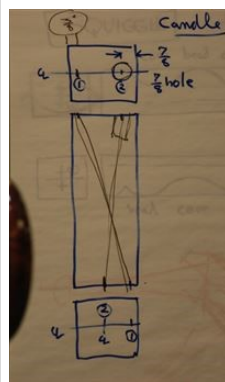


Mark shifted back to the other set of centers and worked on the shape of the coves a bit more. He then went back to true center and finished the ends, cutting in where the beads and coves meet. He made a half bead coming in from the headstock end, leaving a 3/8 inch nub at the base on the headstock side. He did the same at the other or top end of the piece except he made a full bead.

Mark uses a rasp to finish shaping the edges of the piece. He likes rasps purchased from Stewart McDonald luthiers. After the rasp he uses a wood file, then a metal file, then he sands. He uses Lee Valley Japanese saw to cut off the surplus wood at each end and uses a chisel to clean up the remaining wood.

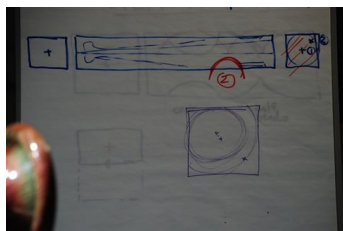


FIGURE: Mark provided a handout on how to make his figures, so we won't repeat all of the steps here. The handout can be found on our website in the documents section under how to articles.



CANDLESTICK: To make the candlestick Mark started with a 3 x 10 1/4 inch blank. The pattern here shows the mounting pattern and where the hole for the candle is drilled. The 7/8" hole is drilled at an angle which will be straight once the piece is completed. Since the blank will, at some point, be mounted on the hole axis, a plug which bottoms out is inserted into the hole. The blank is mounted on the #1 marks and the shaping started. Once the lower section is done the piece is mounted on the second axis and the top portion turned. (See website photos for all steps)

BASEBALL BAT: Mark showed us how to make a baseball bat that looks like it had a chunk knocked out of it by a baseball. In turning this, it is done with one center on the handle and two centers at the top of the bat.



He starts with the piece mounted on centers, and knocks the corners off toward the top. He switches to the off-center point at the top of the bat which is slightly in from one corner of the block. About one third of the way down the blank from the top of the bat, he makes a cove using a

bowl gouge. He cuts about one third of the way into the blank, and checks the shape of the cove with a small ball or the lid of a small jar.



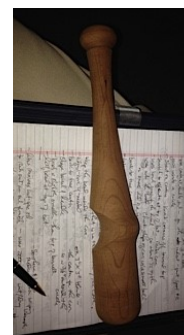
Moving back to true centers, he turns the top of the bat round moving close to the area of the cove but stopping short of it.

He draws a line to determine where the peak of the bump will be on the bat on the opposite side of the center of the cove.

Moving back to the off center point on the top of the bat, Mark makes a soft bead that flattens out on the barrel of the bat, slightly in from lines that would mark the edges of the cove. At this point, you can adjust the shape of the cove if needed.

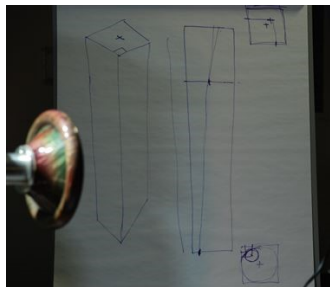


Finally moving back again to the true center, shape the barrel, handle, and knob at the base of the bat. The knob should be slightly smaller than the diameter of the top of the barrel. Make a half bead at the top of the bat. Turn down the surplus wood at each end of the bat, use the Japanese saw to cut off the surplus wood and clean up the ends with a chisel.



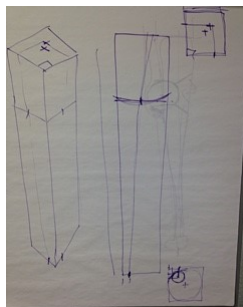
FINISHES: Mark listed the finishes that he likes to use. One is Minwax antique oil. To rub out the final coat of an oil finish to a fine gloss, he uses 2000 grit wet dry sandpaper with turpentine as a lubricant. In between coats of the antique oil he uses Liberon 400 steel wool. Mark also uses Southern and Wells medium luster wiping varnish. He finished with Waterlox tung oil.

FURNITURE LEG: Mark showed how to make a furniture leg with a pad foot at the bottom and a tapered cone going to one side of the pad foot. He started with the



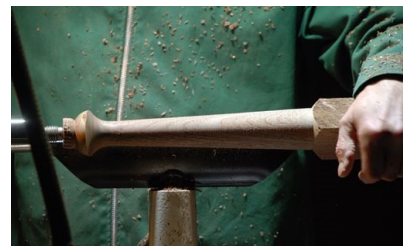
block mounted on true centers and turned a cylinder at the bottom, working up a couple of inches. Make a mark on the blank about 1 inch from the end.

He then moved off center on both ends to the points as indicated in the drawing pictured here. Starting about 11 inches from the top of the leg he did a square to round cut. He then proceeded to shape the leg toward the bottom, making a cone that tapered toward the foot. Make a half cove at the bottom, working down to the mark that is about 1 inch from the end. Don't go all the way to finished diameter at this point.



Go back and work on the top section, finishing the square to round cut so that you get to the

point of not "cutting any air" but rather having cut down to wood all the way around. When initially making the cone, leave a slight bulge in the center to allow room for adjusting it to a straight taper. Return to the true centers on both ends and turn the bottom of the pad foot, making a half bead. Cut off the surplus wood at the bottom using the Japanese saw, and chisel to clean up the wood.



ANOTHER BASEBALL BAT: Mark drew the method for making another baseball bat with a ball projecting out of one side and a cut in the other side. This involves not only turning but also some carving. A picture of how to do this is included here.



SLATE FINISH: In his slideshow, Mark showed some pieces of furniture that have a finish that looks like slate. To do this, he uses either Golden black gesso or milk paint from the Old-fashioned Milk Paint Company. He applies three coats of either the gesso, or milk paint, and wet sands it. Then he puts on white oil based paint and wipes it off.

Time to dig through your shop and dust off those tools, equipment and pieces of wood that you do not know what to do with and bring them to the auction in April

Scholarship Auction

All proceeds go to support our Scholarship Program which provides opportunities to your fellow woodturners to learn new skills and techniques which they can then share with others!!!!

March Show and Tell



Egg Basket
Mary Carol Meinken



Multi-wood Wavy Bowl
KC Kendall



Sweet Gum Bowl
Mike Pankion



Walnut Bowl
KC Kendall



Segmented Ornaments
Ray Feltz



Maple Urn
Gale Bigham



Ambrosia Vase
Steve Trauthwein



Pyrography Cherry Bowl
KC Kendall



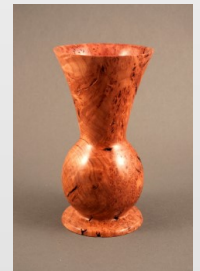
Maple Hollow Form
James Brenza



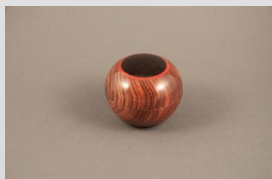
Heartwood Maple Bowl
KC Kendall



Olivewood Box
John Shannon



Redwood Burl Vase
Mike Pankion



Multi-wood Box
John Shannon



Bubinga Vase
Robert Tuemler



Box Elder Bowl
Mike Ball



Deadwood Bowl
Robert Hare



Celtic Knot Box
John Shannon



Walnut Vase
Mike Pankion



Cherry & Cocobolo Platter
KC Kendall



Box Elder Hollow Form
Gale Bigham



Narra Square Bowl
Robert Tuemler

March Show and Tell



Embellished Maple Vase
Bruce Gibson



Spalted Elm Bowl
Gary Claytor



Crabapple Bowl
Dick Manteuffel



Embellished Maple Vase
Bruce Gibson



Walnut & Osage Stoppers
Glenn Johnson



Natural Edge Ash Bowl
Dick Manteuffel



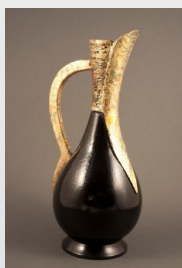
Spalted Maple Bowl
Gary Claytor



Various Wood Boxes
Gary Vance



Elm Burl Bowl
Dick Manteuffel



Cherry & Maple Pitcher
Nancy Bowman



Oak Leaves
Bruce Gibson



Tiger Maple Vase
Mike Pankion



Box Elder Bowl
Glenn Johnson



Various Weed Pots
Ed Vance



Thin Spindle
Jack Brown



Natural Edge Apple Bowl
Dick Manteuffel



Holly Butterfly Pot
Bruce Gibson



Pear Cystoid
Bruce Gibson



Rudy Lopez Style Bowl
Jim Susco

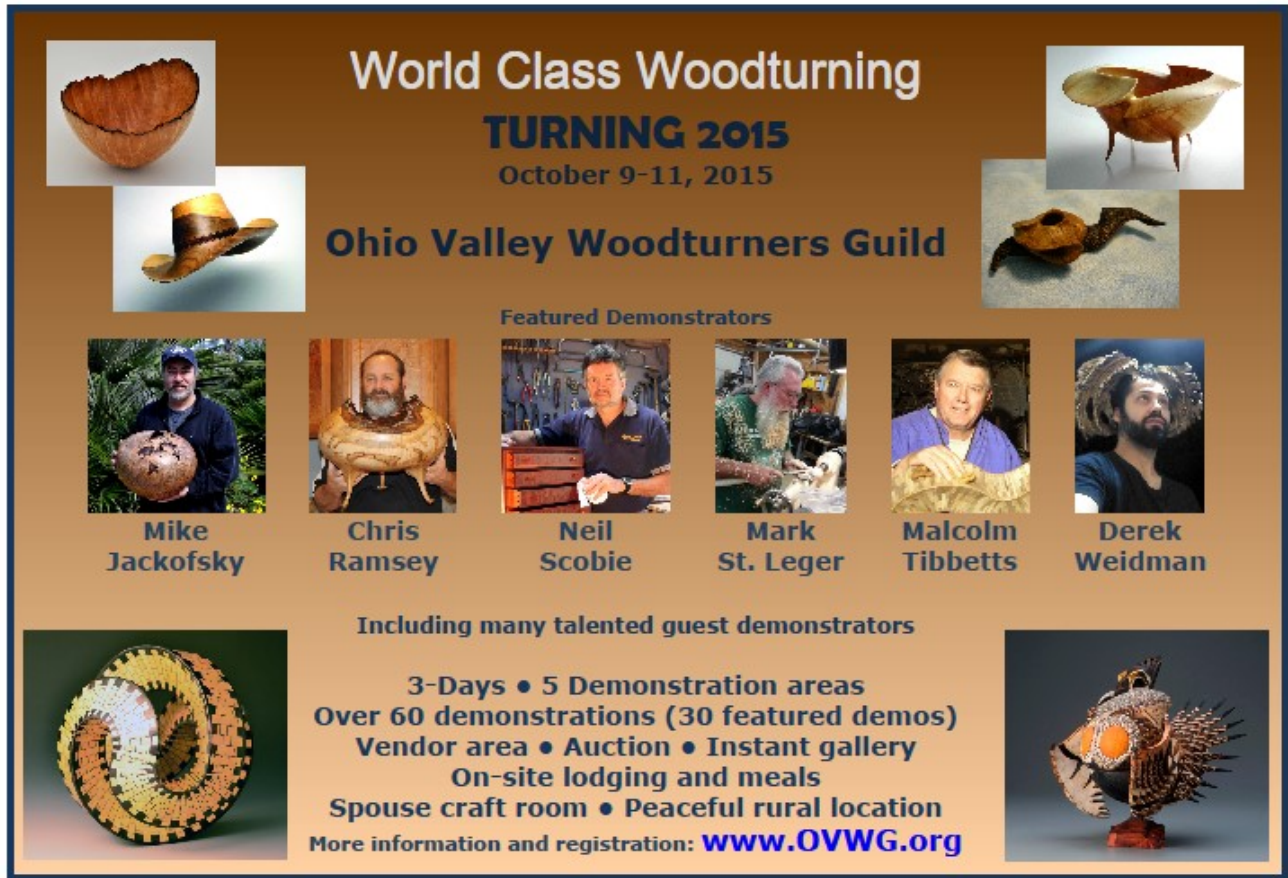


Egg Jig
Ed Gerth



Big Leaf Maple Bowl
David Scott

TURNING 2015



President's Challenge for April

Turn something that is multi-axis.



Appalachian Festival 2015

Join Us For this Mothers' Day Weekend Event

The annual Appalachian Festival is just around the corner! It is on Mothers' Day weekend, May 8th, 9th and 10th at Coney Island off Kellogg Avenue, along the Ohio River! For several years now, the Ohio Valley Woodturners Guild has been a part of this celebration of the Appalachian Way of life. Each year members converge into a designated to do demonstrations in an effort to educate the public about the art of woodturning. Those that participate also have the option of displaying and selling their turned items. There is a fee for this. In prior years, there was only a table rental fee involved, but in keeping with the guidelines of the AF Board of Directors of keeping the playing field even among all vendors, a booth fee has been imposed this year. (by them, not us!!) The fee will be \$105.00 per 10 x 10 ft. space for 3 days plus a \$10.00 per table rental fee. You may bring your own tables, but they must be a standard size 8 ft. banquet table so as to provide continuity and a neat appearance in our booth. A 1/2 space (enough for one 8 ft table) will be \$25.00 per day which includes table rental. This year we will be located on "Pad C". We were there several years ago and it is a pretty decent location. It should have a new canopy covering it this year.



Basic requirements will be: Current paid up member of OVWG, ability to turn and demonstrate on the electric lathe in a proficient and safe manner and to come early and stay late to set up and tear down!!! More exact details will follow once a complete roster is established. Friday morning will usher in many yellow school buses with kids getting in one more field trip for the year! We set up early each day, around 7:30 or so. The event closes at 9:00 PM on Friday & Saturday and 6:00 PM on Sunday evening. This is a lot of fun! There is always much camaraderie, snack sharing, interacting with the crowd and so much more. If you have been itching to try out something where you can show your skills to others and sell your turned items, then this is a good event to do so!

So far the number of members who have expressed desire to be involved in this event had been a little lower than usual. That may be in part my fault due to getting information out late. That in turn is due to my getting information from the committee later than usual. Unavoidable---sorry.

Please consider getting on board with this event. Even if you don't have the desire to sell your merchandise, PLEASE CONSIDER JUST COMING DOWN AND DOING SOME DEMONSTRATIONS! YOU CAN HANG OUT WITH US ALL DAY AND ENJOY INTERACTING WITH THE ATTENDEES! Arrangements will be made to get you into the park with no admission fee! COME SUPPORT YOUR CLUB!

To sign up to have a great time or to make inquiries, please email or phone one of the following:
Gary Webster 859-342-7792 thewoodman@fuse.net
Mary Carol Meinken 513-521-1517 marycarolmeinken@gmail.com



Rockler in Tri-County
333 E. Kemper Rd., 513-671-7711
All OVWG members receive **10% off all**
purchases (except Festool & SawStop)

ANCHORSEAL

\$12 / gallon. This green wood end-sealer is available in 1 or 5 gallon containers.

EXOTIC WOODS

BIG MONK LUMBER CO. Turning squares and bowl blanks. Afata to Zebano

www.bigmonklumber.com

Call or email for price list and be sure to stop by the table at a meeting.

Contact: **Pete Kekel**

859-653-3520

2ndnature@fuse.net

SANDING SUPPLIES

Available in All Grits. Yellow, Green, Blue, White. Abralon. Scotchbrite. Mandrels.

Interface Pads.

Any size. Any shape.

Round, Wavy, Belts, Detail Sanding.

Jon Hornbach 513-702-2427

WoodyMcSander@gmail.com



WOODCRAFT®
Helping You Make Wood Work

513-874-6181

11711 Princeton Plaza, Suite 251
Near Tri-County Mall



Ohio Valley Woodturners Guild

Newsletter Editor David Wright

7203 Timbernoll Drive

West Chester, OH 45069

Please submit articles to the editor by email:

davidwright@fuse.net

OVWG Board of Directors

Elected Officers

President: K. C. Kendall
513-755-8856 kckendall@cinci.rr.com

Past President: Jon Hornbach
513-702-2427 WoodyMcSander@gmail.com

1st Vice President: Tom Walters
513-476-4342 waltersconstructionltd.tom@gmail.com

2nd Vice President: Jerry Warner
859-442-0410 jwarner45@twc.com

Treasurer: Kurt Foglesong
859-356-3281 jfoglesong@fuse.net

Secretary: David Wright
513-805-8335 davidwright@fuse.net

Members-at-Large

Dave Kratzer
513-290-9609 dave_kratzer@iname.com

Mike Pankion
513-777-5599 mpankion@cinci.rr.com

Mary Carol Meinken
513-521-1517 marycarolmeinken@gmail.com

John Richey
513-769-5863 johnrichey@cinci.rr.com

John Shannon
513-965-8873 john.shannon@cchmc.org

Mike Ball
513-324-3148 ballwoodworks@gmail.com

Appointed Positions

Newsletter Editor:

David Wright
davidwright@fuse.net
513-805-8335

Webmaster:

Dave Kratzer
webmaster@ovwg.org
513-290-9609

Symposium Leader:

Jon Hornbach
woodymcsander@gmail.com
513-702-2427

Audio Visual Leader

John Richey
johnrichey@cinci.rr.com
513-769-5863

OVWG Mentors

Do you need help getting started or working out a problem? Call any of the names listed below. As always, there is **NO CHARGE** to members of the Ohio Valley Woodturners Guild. We love to share our woodturning passion. Call us, we want to help you.

Central:	Dave Morrical	513-771-5205
	John Albachten	513-325-9002
	Mary Carol Meinken	513-521-1517
Loveland:	John Lannom	513-683-3129
	Dave Kratzer	513-290-9609
North Side:	K.C. Kendall	513-755-8856
West Chester:	Mike Pankion	513-777-5599
East Side:	Gary Brackett	513-553-7474
Dayton:	Jim Burrowes	937-371-9426
	Lowell Converse	937-426-2646
	René Keyzer-André	937-277-4717
	Gary Vance	

Tipp City		
Kentucky:		
Kenton Cnty:	Pete Kekel	859-653-3520
Campbell Cnty:	Keith Bundy	859-781-5414
Indiana:		

Southeast:	Gerald Williams	812-689-6545
-------------------	------------------------	---------------------

Contact: KC Kendall, Mentoring Chairperson, with any changes or if you'd like to join these talented volunteers.

Meetings

Demonstration meetings are generally held the third Saturday of the month (September through June) from 9:00am to 3:00pm. Registration and set up starts at 8:00am. Meeting cost (includes lunch) is \$10 for members and \$15 for nonmembers when there is a professional demonstrator and \$5 for members and \$10 for nonmembers for "home grown" demonstrators. Annual membership dues are \$25 (\$20 for AAW members) payable upon joining.